


**Alert:** [Computer freeze or blue screen error \(BSOD\) after Adobe Flash Player update](#)

## How do I create a firewall rule to allow / disallow use of a certain application? (5.x)

KB Solution ID: SOLN2843|Last Revised: October 26, 2011

The ESET Personal firewall acts as a network traffic filter that regulates communication within the local network or Internet. Using predefined rules, the Personal firewall analyzes network communication and decides whether or not to allow it. You can configure your Personal firewall to make exceptions for certain applications.

To create an application-based firewall rule, follow the steps below:

1. Open the main program window by double-clicking the ESET icon  next to the system clock or by clicking **Start** → **All Programs** → **ESET** → **ESET Smart Security**.
2. Press the **F5** key on your keyboard to access the Advanced setup window.  
**NOTE:**  
If your settings are password protected, you will need to enter your password and click **OK** to complete this action (This password is different from the ESET product username and password. For more information on this password, [click here](#)).
3. In the Advanced setup tree expand **Network** and click **Personal firewall** (see **Figure 1-1**).
4. Select **Automatic mode with exceptions (user-defined rules)** from the Filtering mode drop-down menu.

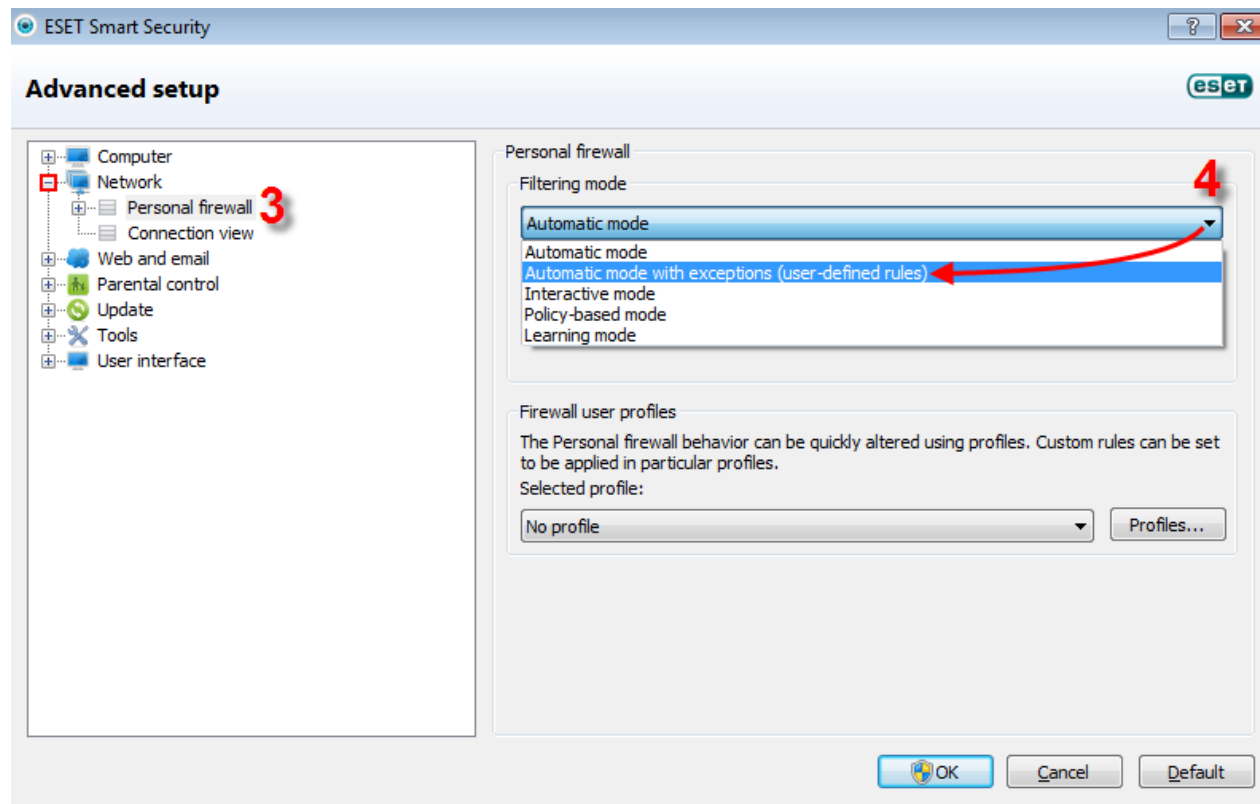


Figure 1-1

[Click the image to view larger in a new window](#)

5. In the Advanced setup tree, expand **Personal firewall** and click **Rules and zones**.
6. Click **Setup...** in the **Zone and rule editor**.

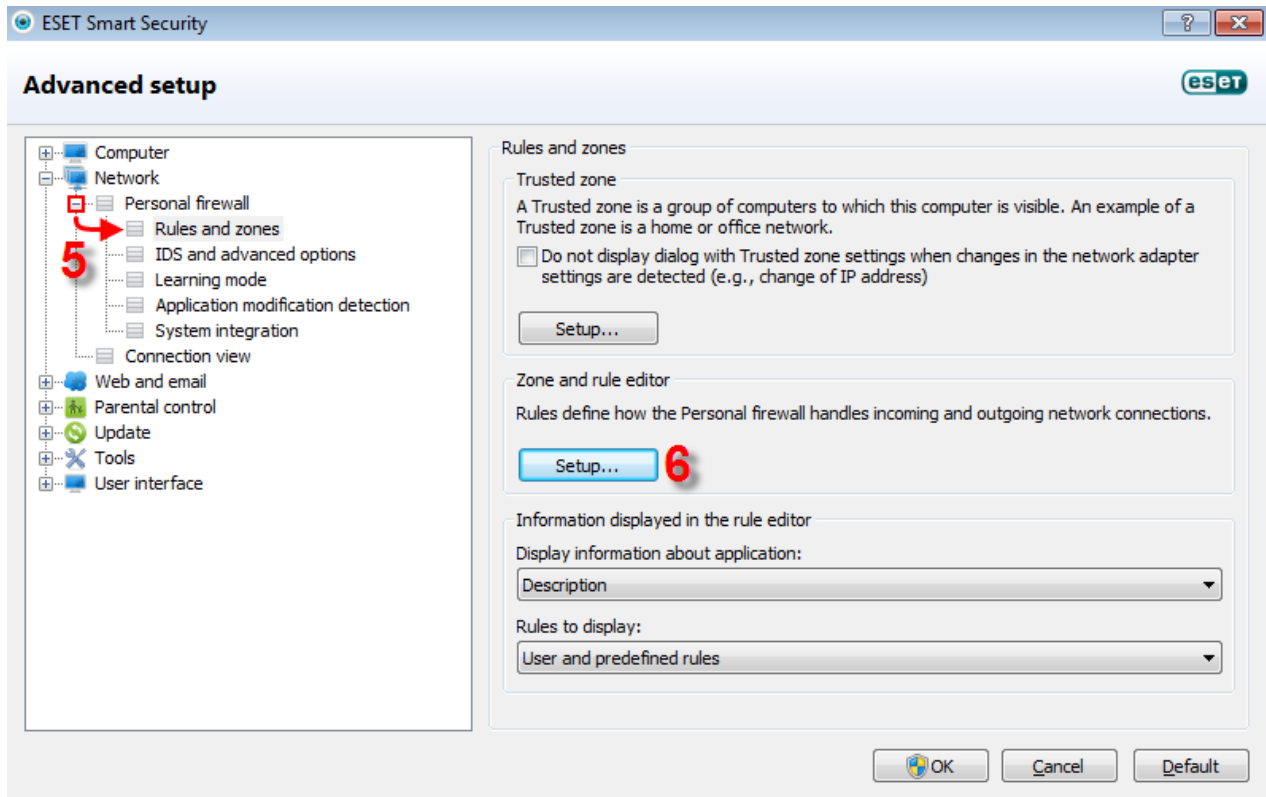


Figure 1-2

Click the image to view larger in a new window

7. Click **New** in the **Zone and rule setup** window.

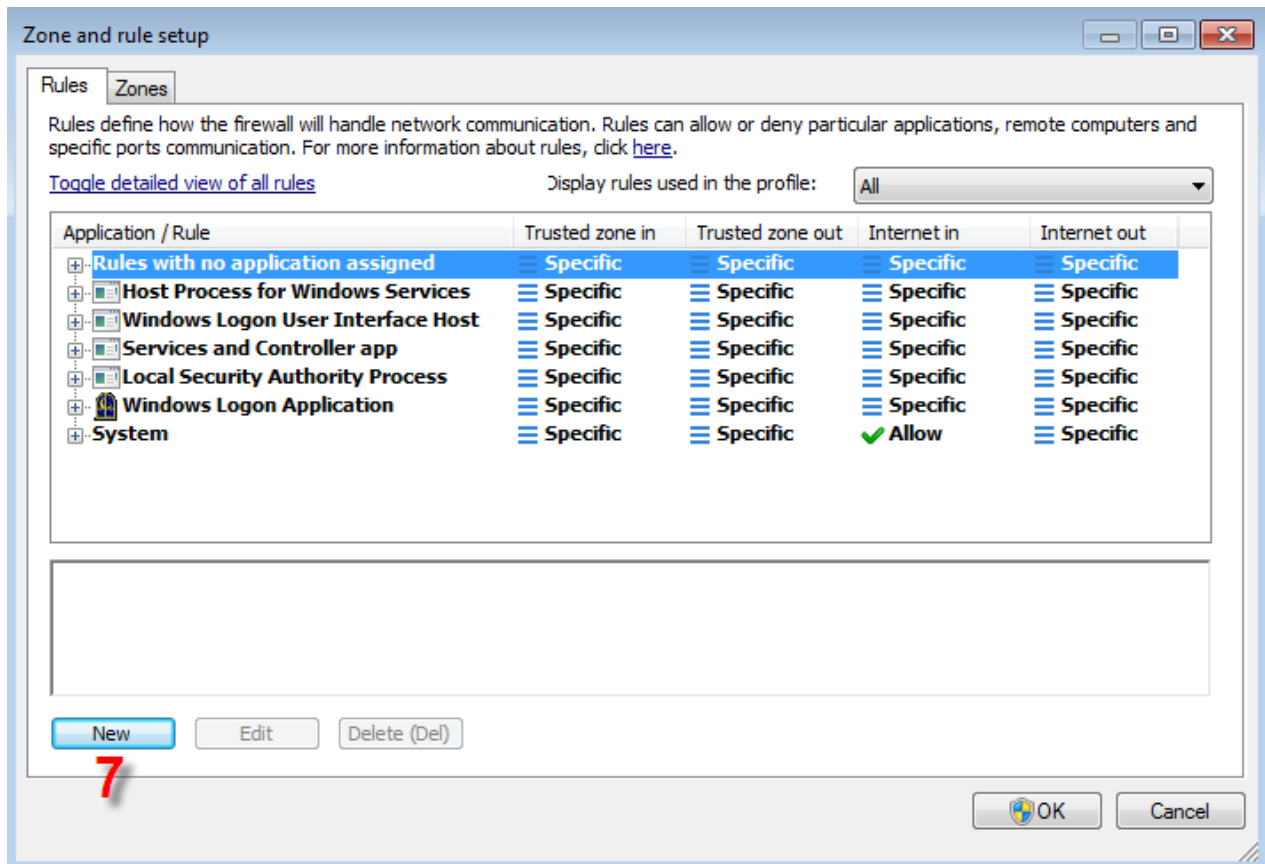


Figure 1-3

Click the image to view larger in a new window

8. Enter a name for your rule and select **Allow** from the **Action** drop-down menu (see **Figure 1-4**).
9. Click the **Local** tab.

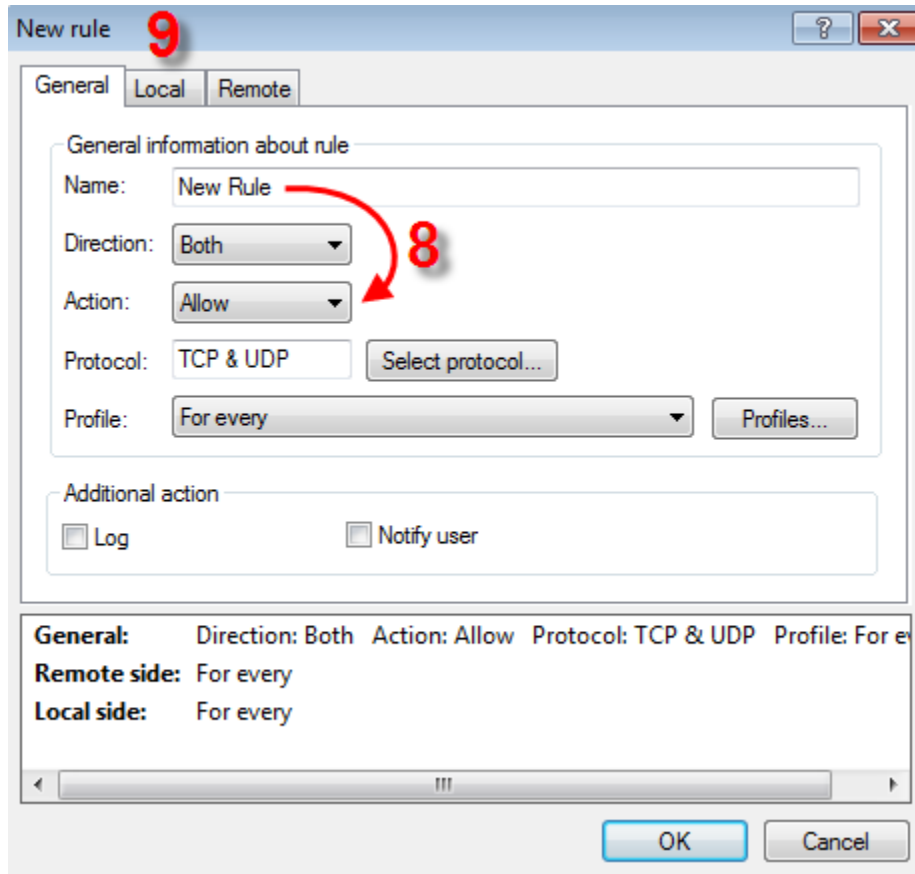


Figure 1-4

10. Click **Browse...** and navigate to the location of the application you wish to create the rule for. Select the application and click **Open**.
11. Make sure you see **For every** next to the **Remote side:** and **Local side:** port settings and click **OK** to create the new rule.

